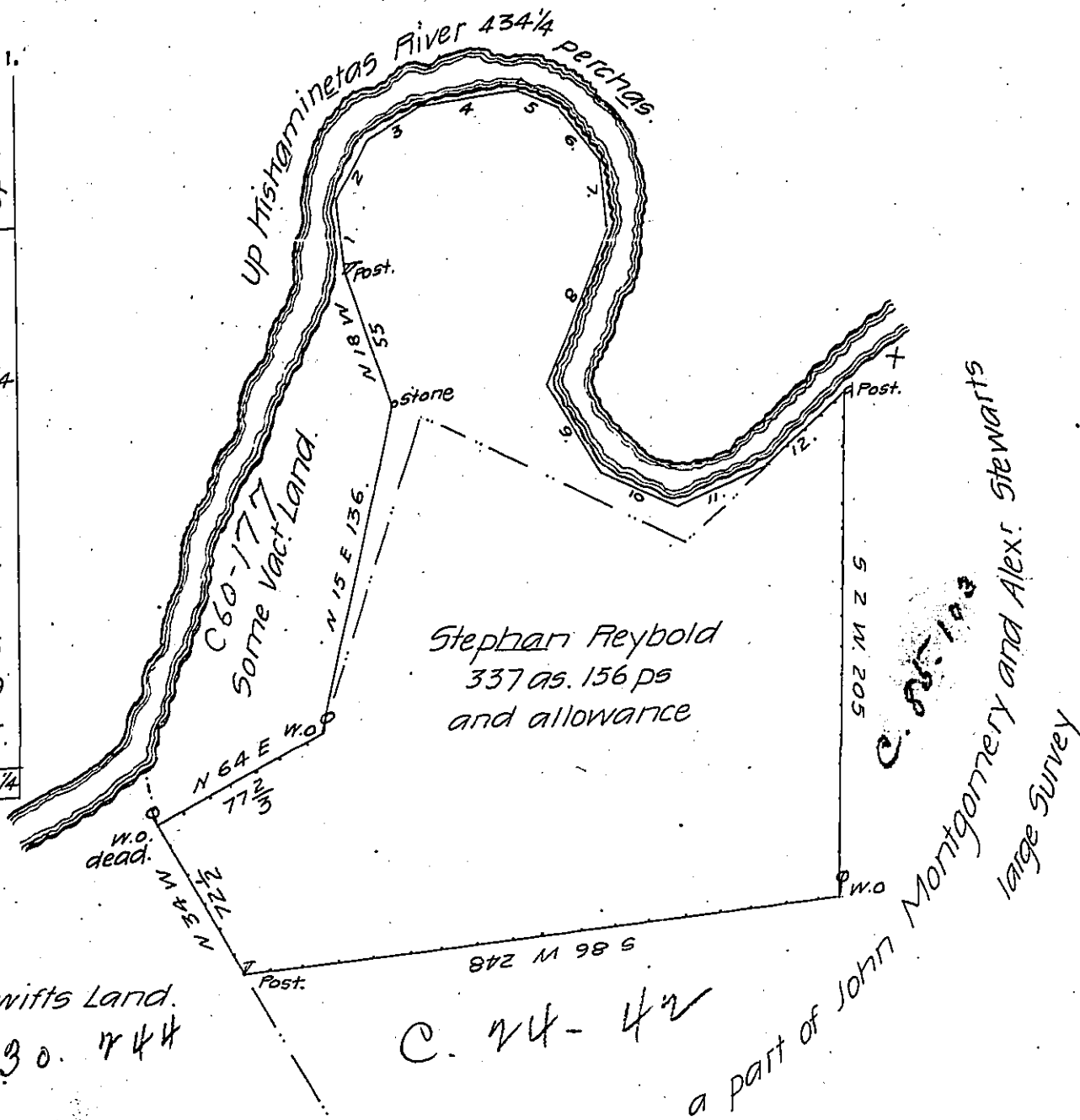


FORM NO. 1.

Number of Courses.	Courses up Hishaminetas River.	distances up River
1	N. 3. W.	33
2	N. 30. E.	27
3	N. 60. E.	27
4	N. 85. E.	39 1/4
5	S. 67. E.	20
6	S. 36. E.	25
7	S. 7. E.	29
8	S. 24. W.	70.
9	S. 30. E.	43
10	S. 65. E.	36
11	N. 70. E.	39
12	N. 48. E.	46.
Total dist		434 1/4



In pursuance of a Warrant dated March 31st 1788 and also in obedience to an order from the Honble Board of Property dated Decr 11th 1802 there was Surveyd for Stephan Reybold the above described Tract of Land containing three hundred and thirty seven acres and 156 perches with an allowance proportioned to six P. Cent Situate in Washington Township in the County of Westmoreland Surveyd May 26th 1803.

John Moore D.S.

Samuel Cochran Esquire  
Surv. Genl of Penna

N.B. what is comprehended in the above doted lines was Surveyd and returned to John Montgomery and Alex. Stewart on Special Order No. 14.

IN TESTIMONY that the above is a copy of the original remaining on file in the Department of Internal Affairs of Pennsylvania, made conformably to an Act of Assembly approved the 16th day of February, 1833, I have hereunto set my Hand and caused the Seal of said Department to be affixed at Harrisburg, this nineteenth day of September 1906

Isaac B. Brown  
Secretary of Internal Affairs